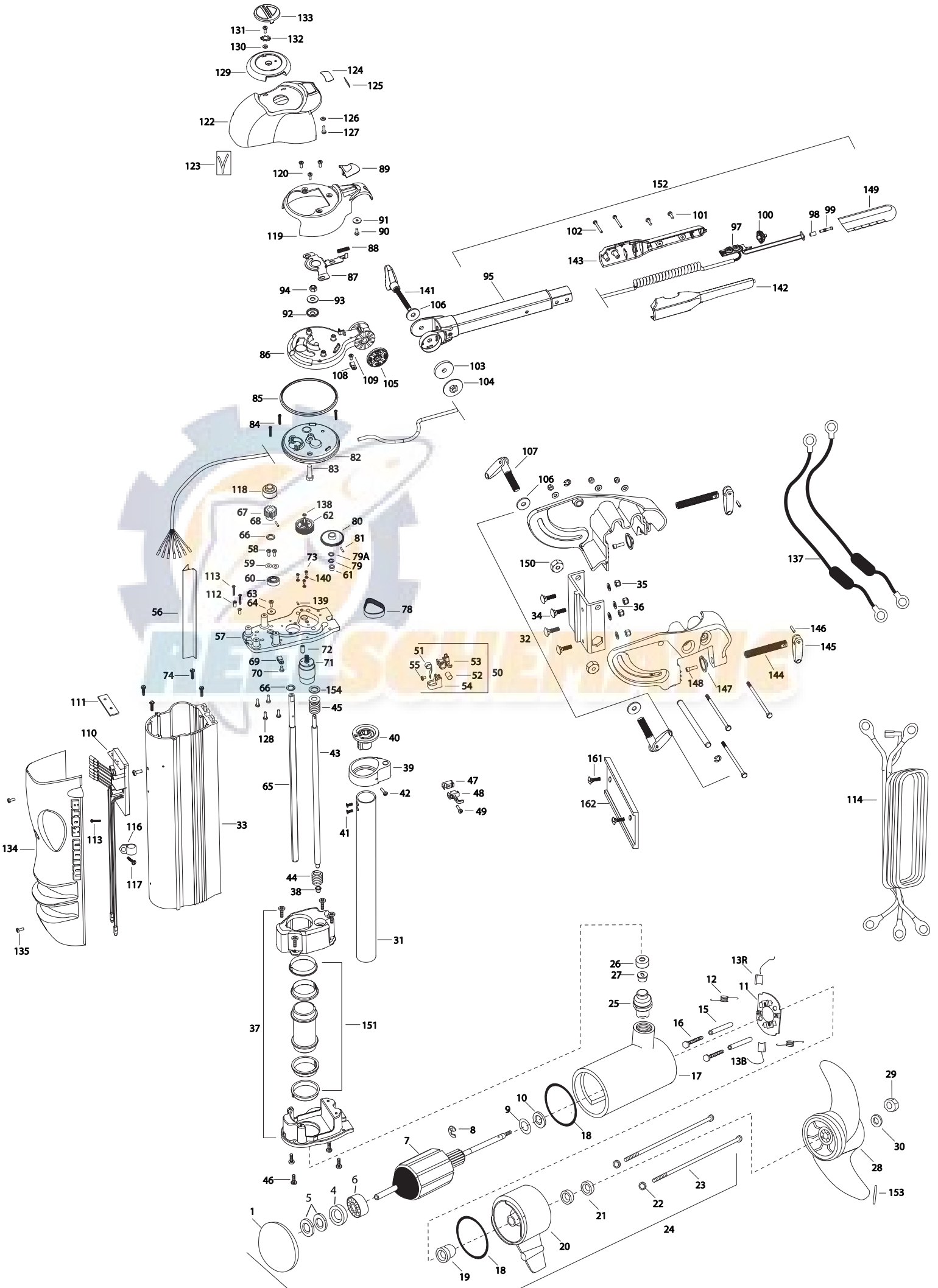


VANTAGE 101
101 LBS THRUST
36 VOLT 46 AMPS

for use with "M" serial numbers
2-year warranty



| | | | | | | | | | |
|-----|-----------|--|------|---------|---|------|---------|-------------------|--|
| 1 | 421-276 | PLAIN END HOUSING ASSEMBLY | ■ | 2770405 | TOP PLATE ASSEMBLY INCL.57,60,61,68 | | | | |
| 4 | 990-045 | THRUST SPACER | *57 | 2051927 | TOP PLATE, VANTAGE | *106 | 2051737 | INCL. 106,107,150 | WASHER-FLAT,ID.406 X OD.8 |
| 5 | 992-010 | SPRING WASHER [2.EA] | 58 | 2053414 | SCREW-#8-32 X 1/2 TRI-LOBE[2.EA] | *107 | 2050922 | | HANDLE, TENSION, SHORT |
| 6 | 140-010 | BALL BEARING | 59 | 2051717 | WASHER-#8 SAE FLAT ZNK PLT [2.EA] | 108 | 2052510 | | CABLE CLAMP, 3/16" VANTAGE [2.EA] |
| 7 | 2-100-216 | ARMATURE ASSEMBLY | *60 | 2057306 | BEARING-BALL (VANTAGE) | 109 | 2053415 | | SCREW-#8-32 X 3/8" TRI-LB[3.EA] |
| 8 | 788-040 | RETAINING RING | *61 | 2057302 | BEARING-UPPER, LIFT SCREW | *110 | 2774041 | | CNTRL BRD ASSY 24/36V W/PAD INCL.111 |
| 9 | 990-051 | WASHER-THRUST, STEEL | *62 | 2052630 | PIN, CLUSTER GEAR | *111 | 2315105 | | INSULATING PAD |
| 10 | 990-052 | WASHER- NYLATRON | 63 | 2053415 | SCREW-#8-32 X 3/8 TRI-LOBE P | 112 | 2261712 | | SHOULDER WASHER [2.EA] |
| ■ | 2-600-144 | BRUSH/WIRE/PLATE ASSEMBLY INCL.11-13 | 64 | 2051716 | WASHER-FENDER #10 | 113 | 2053407 | | SCREW-#8-32 X .75 PPH[3.EA] |
| *11 | 738-004 | BRUSH PLATE 4" TERMINAL | 65 | 2052001 | SHAFT-STEERING, VANTAGE | 114 | 2051220 | | LEADWIRE,24/36V,3 CONDUCT |
| *12 | 975-041 | SPRING -TORSION [2.EA] | 66 | 2051706 | WASHER-SPRING SUPPORT[2.EA] | 116 | 2052512 | | CABLE CLAMP, 1/2" VANTAGE |
| 13 | 188-094 | BRUSH | 67 | 2052205 | GEAR, STEERING TUBE MACHINED | 117 | 2053415 | | SCREW-#8-32 X 3/8" TRI-LOBE P |
| 13 | 188-094 | BRUSH | *68 | 2052615 | PIN-DRIV-LOK 1/8 X 1 1/8 | 118 | 2052210 | | ROLLER-STEERING SHAFT |
| 15 | 973-025 | SPACER -BRUSH PLATE [2.EA] | 69 | 2052510 | CABLE CLAMP, 3/16" VANTAGE | ■ | 2880102 | | CONTROL HEAD COVER LATCH KIT |
| 16 | 830-027 | SCREW -SELF THREADED 10-32 X 2" [2.EA] | 70 | 2053415 | SCREW-#8-32 X 3/8 TRI-LOBE P | | | | INCL. 89,90,91,119 |
| 17 | 431-110 | HOUSING ASSEMBLY- CENTER | 71 | 2777812 | MOTOR-LIFT (12,24,36V) | 119 | 2050200 | | COVER-CONTROL HEAD |
| 18 | 701-043 | O-RING (2 REQ'D) | 72 | 2058411 | TENSIONER-BELT (VANTAGE) | 120 | 2053415 | | SCREW-#8-32 X 3/8" TRI-LOBE[3.EA] |
| 19 | 144-017 | BEARING -FLANGE | 73 | 2053422 | SCREW - 3MM | 121 | 2012100 | | SCREW-8-18 X 5/8" THD CUT[3.EA] |
| 20 | 2-300-160 | BRUSH END HOUSING ASSEMBLY | 74 | 2053413 | SCREW-10-16X1' TYPE AB,HEX[4.EA] | 122 | 2050211 | | SHROUD-CONTROL HEAD |
| 21 | 880-025 | SEAL [2.EA] | ■ | 2882201 | CLUSTER GEAR / FLANGE PULLEY KIT | 123 | 2055612 | | DECAL-SHROUD (VANTAGE)[2.EA] |
| 22 | 701-009 | O-RING -THRU BOLT [2.EA] | | | INCL. 75,76,77 | 124 | 2055602 | | DECAL-COVER, 36V |
| ■ | 2889460 | SEAL & ORING KIT INCL. 18, 21, & 22 | *75 | 2770428 | PULLEY/PINION GEAR ASSEMBLY | 125 | 2055610 | | DECAL-COVER, LED |
| 23 | 830-096 | THRU BOLT 12-24 X 11.56" SS [2.EA] | *76 | 2058405 | FLANGE-PULLEY (VANTAGE) | 126 | 2051712 | | WASHER- .152 ID, .50 OD, .06 |
| 24 | 2316261 | MOTOR ASSEMBLY, 4", 36V (ITEMS 1-27) | *77 | 2053418 | SCREW 4-40 X 1/4 PPH[2.EA] | 127 | 2302100 | | SCREW-6-20 X 1/2" THD CUT |
| 25 | 979-015 | STRAIN RELIEF - BODY | 78 | 2050800 | BELT-DRIVE (VANTAGE) | 128 | 2012100 | | SCREW-8-18 X 5/8" THD CUT(4REQ'D) |
| 26 | 9950339 | CAP - STRAIN RELIEF | 79 | 2051705 | WASHER-NYLON ID.312 X OD. | 129 | 2050110 | | KNOB-POINTER, VANTAGE |
| 27 | 2382900 | GROMMENT - STRAIN RELIEF | 79A | 2051703 | WASHER-THRUST ID.315, OD.562 | 130 | 2051717 | | WASHER- #8 SAE FLAT ZNK PLT |
| 28 | 2331160 | PROPELLER (W.WEDGE 2) MAX 101 | ■ | 2882200 | GEAR LIFT/PIN KIT INCL.80,62 | 131 | 2332101 | | SCREW-8-32 X 1/2" SS |
| 29 | 2093101 | NUT-PROP NYLOC (LARGE) MAX 101 | *80 | 2990426 | LIFT GEAR ASSEMBLY | 132 | 2371715 | | LOCKWASHER-STAR #8 ZINC |
| 30 | 2091701 | WASHER-PROP (LARGE) MAX 101 | 81 | 2052620 | PIN-DRIV-LOK 1/8 X 5/8" | 133 | 2056700 | | PLUG, POINTER, VANTAGE |
| 31 | 2772010 | TUBE-MOTOR, 1 3/4" KIT W/TEMPLATE | 82 | 2056520 | CAP-LOWER, GEAR HOUSING | 134 | 2050220 | | SHIELD-EXTRUSION, VANTAGE |
| 32 | 2991822 | TRANSOM BRACKET ASSEMBLY 36V | 83 | 2383500 | BOLT-3/8-16 X 1.25 | 135 | 2053414 | | SCREW-#8-32 X 1/2" TRI-LOBE[2.EA] |
| 33 | 2056505 | HOUSING EXTRUSION | 84 | 2053402 | SCREW-10-24 X 1" TRI-LOBE [3.EA] | 136 | 2055611 | | DECAL-SHIELD (VANTAGE)[2.EA] |
| 34 | 2053511 | BOLT-CARRIAGE 5/16-18 1"[4.EA] | 85 | 2054600 | O-RING, GEAR HOUSING | 137 | 2998200 | | CIRCUIT BRKR ASSEMBLY 36V [2.EA] |
| 35 | 2151726 | WASHER-5/16 STD (S/S)[4.EA] | 86 | 2056510 | CAP-UPPER, GEAR HOUSING | 138 | 2051732 | | WASHER .315 X .562 |
| 36 | 2053103 | NUT, 5/16-18 NYLOC [4.EA] | 87 | 2057200 | LATCH (VANTAGE) | 139 | 2053420 | | SET SCREW #8-32 |
| 37 | 2770420 | LOWER SUPPORT CAGE ASSEMBLY | 88 | 2052711 | SPRING, LATCH RETURN | 140 | 2051710 | | LOCKWASHER 3MM |
| 38 | 2057302 | BEARING-UPPER, LIFT SCREW | 89 | 2050102 | KNOB-LATCH (VANTAGE) | 141 | 2050921 | | HANDLE TENSION - LONG |
| ■ | 2881510 | YOKE/BEARING RACE KIT INCL.39,40,42 | 90 | 2353401 | SCREW-10-16 X 1/2 STALGD | ■ | 2880910 | | HANDLE L/R KIT |
| *39 | 2051510 | YOKE-LIFT SCREW | 91 | 2051716 | WASHER-FENDER #10 | | | | INCL. 100,101,102,142,143,150 |
| *40 | 2056200 | BEARING RACE-YOKE | 92 | 2151730 | WASHER-CUP (HINGE BRACKET) | *142 | 2050916 | | HANDLE SIDE L |
| 41 | 2053401 | SCREW-10 X 1/2,TYPE 25,[2.EA] | 93 | 2051737 | WASHER-3/8 FLAT (ZINC) | *143 | 2050911 | | HANDLE SIDE R |
| 42 | 2353401 | SCREW-10-16 X 1/2 STALGD | 94 | 2053107 | NUT-3/8-16, TOPLOCK | ■ | 2880925 | | HANDLE/CLAMP SCREW KIT |
| 43 | 2053400 | SCREW-LIFT, 1/2-10 ACME | 96 | 2990921 | HANDLE ASSEMBLY, VANTAGE | | | | INCL. 2 EA OF 144-148 |
| 44 | 2052707 | SPRING-COIL,SOFT STOP | ■ | 2884106 | HANDLE CTRL BOARD/GRIP KIT INCL. 97,149 | *144 | 2051300 | | SCREW-CLAMP 5/8X4 |
| 45 | 2770429 | COIL SPRING/WASHER ASSEMBLY KIT | *97 | 2994005 | CTRL BOARD ASSEMBLY-HANDLE | *145 | 2050925 | | HANDLE-CLAMP SCREW |
| 46 | 2053413 | SCREW-10-16X1' TYPE AB,HEX (4 REQ'D) | 98 | 2055115 | BUTTON SWITCH ACTUATOR | *146 | 2052625 | | PIN-COILED SPRING |
| ■ | 2883200 | WIRE CLAMP KIT INCL. 47,48,49 | ■ | 2883701 | PLUNGER/GRIP KIT INCL. 99,149 | *147 | 2011710 | | WASHER-CLAMP SCREW |
| *47 | 2053200 | WIRE CLAMP, LEFTHAND | *99 | 2053700 | PLUNGER, ON/OFF | *148 | 2263402 | | SCREW- 1/4-20X3/4" |
| *48 | 2053205 | WIRE CLAMP, RIGHTHAND | 100 | 2050111 | KNOB-SPEED CONTROL | 149 | 2880424 | | GRIP KIT |
| *49 | 2053417 | SCREW-10-16X3/4 TYPE BT,PPH | 101 | 2012100 | SCREW-8-18 X 5/8" THD CUT[2.EA] | *150 | 2053105 | | NUT- HEX |
| 50 | 2770400 | TAPE SPRING ASSEMBLY INCL. 51-55 | 102 | 2053412 | SCREW 8 X 1.5"TYPE 25 PPH[2.EA] | 151 | 2881500 | | TUBE/SLEEVE/BUSHING KIT |
| 51 | 2052705 | SPRING, CONSTANT FORCE | ■ | 2880921 | HANDLE TENSION KNOB KIT | 152 | 2990950 | | HANDLE/CTRL BOARD ASSEMBLY |
| 52 | 2052610 | PIN-PIVOT 7/16" O.D. | | | INCL. 103,104,105,141 | 153 | 2262658 | | PROP PIN |
| 53 | 2051920 | BRACKET-SPRING | *103 | 2051736 | WASHER-URETHN,ID.4 X OD 1 | 154 | 2340610 | | CONNECTOR CABLE |
| 54 | 2052305 | WIRE GUIDE (VANTAGE) | *104 | 2053115 | NUT-WASHER, HANDLE ASSEMBLY | ■ | 2994844 | | TRANSOM EXTRUSION KIT (INCL.161 & 162) |
| 55 | 2053418 | SCREW-#4-40X1/4 TYPE F,PPH | *105 | 2050015 | RACHET-DISK, HANDLE ASSEMBLY | *161 | 2053421 | | BOLT 14-1/4X1 |
| 56 | 2050225 | WIRE SHIELD | ■ | 2880920 | BRACKET TENSION HANDLE KIT | 162 | 2058415 | | TRANSOM EXTRUSION |

VANTAGE 101

36 VOLTS ONLY

